

# Ancaster Weatherbed

## Specifying the stone

### Quarry details

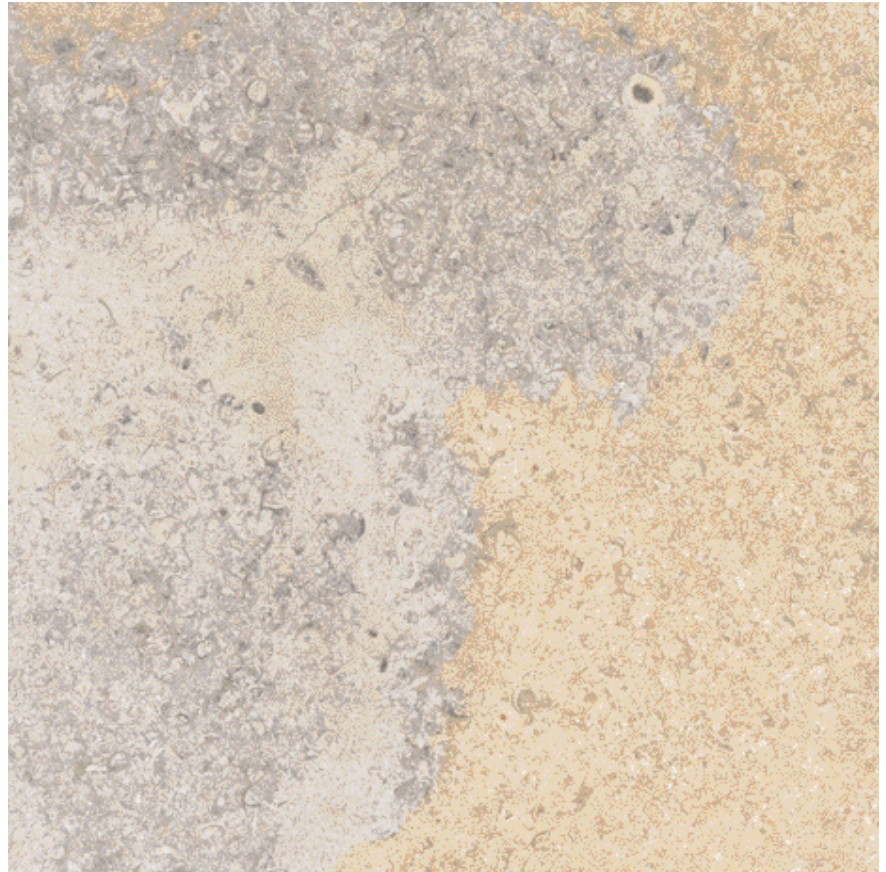
Ancaster Quarry, Quarry Farm,  
Ancaster, Nr. Grantham,  
Lincolnshire, England

### Supplier

Block Stone Limited,  
Wingerworth,  
Derbyshire, S42 6RG

### Contact

[blockstone@realstone.co.uk](mailto:blockstone@realstone.co.uk)



Limestone

## Technical results

Description	Fine-grained jurassic limestone. Durable with good weathering qualities.	
Country of origin	UK	
Geological type	Jurassic limestone	
Colour	Beige / blue and beige / occasional pink variations	
Density	2410 kg/m <sup>3</sup>	
Compressive strength	85 -100 MPa	BS EN 1926 (1999)
Water absorption	3.92 %	BS EN 13755 (2002)
Porosity	8.3 %	BS EN 1936 (1999)
Durability	Pass Change in flexural strength 0.8 %	BS EN 1341 (2001)
Slip resistance	Dry 82 Wet 83	BS EN 1341 (2001)
Abrasion resistance	31.6mm Light commercial use	BS EN 1341 (2001)
Salt crystallisation	Weight loss -0.51 % Excellent	BS EN 12371
Saturation co-efficient	0.9 %	BRE 89

Please note that stone is a natural product and all results are subject to variation

## Block sales

Block Stone Limited,  
Bolehill Quarry,  
Wingerworth, Chesterfield,  
Derbyshire, S42 6RG,  
England, UK

tel +44 (0)1246 554450  
fax +44 (0)1246 220095  
email [blockstone@realstone.co.uk](mailto:blockstone@realstone.co.uk)



[www.blockstone.co.uk](http://www.blockstone.co.uk)